

Kimtech™ A5 Sterile Cleanroom Apparel with Clean-Don™ Technology: Gowning Technique

KIMTECH™

BEFORE GOWNING

- 1** **(Pre-Entry)** Don Hair Net, Shoe Covers (and Beard Cover if applicable) after removing all jewelry and cosmetics.
- 2** **(Gowning)** Wash hands and don first pair of sterile gloves. Sanitize gloves after donning each article if required.
- 3** Don mask and hood assuring a secure fit. (Integrated hood and mask incorporates both components into one.)

BEGIN GOWNING

Snaps allow gathered-up arms and legs to expand during gowning.



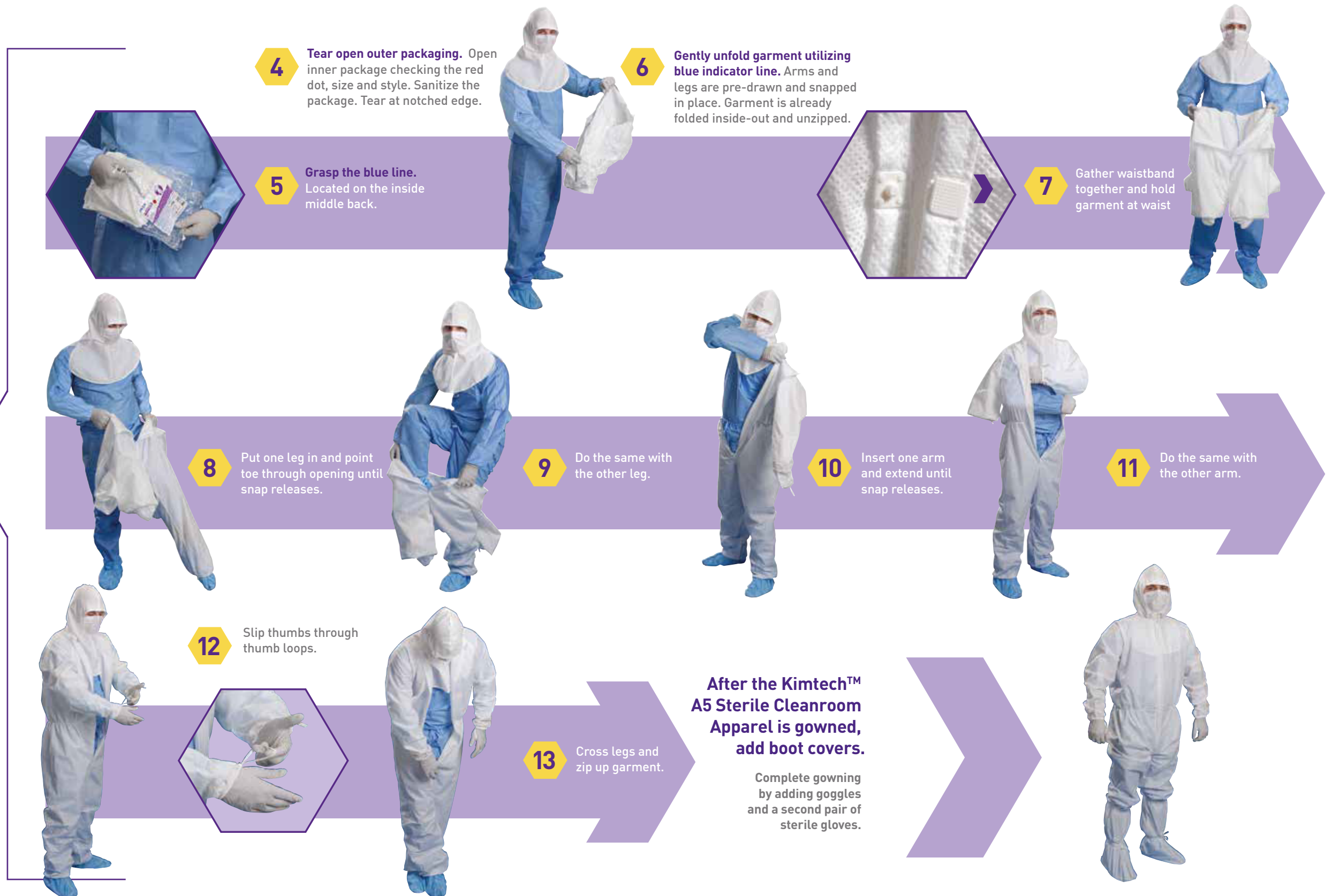
For more information visit us at www.eu.fishersci.com or contact your local Fisher Scientific Representative.

Trademarks of Kimberly-Clark Worldwide, Inc. ©2020 KCWW Publication code ID 4527.01 EN 06.20

Distributed by Fisher Scientific. Contact us today:

Austria: fishersci.at Belgium: fishersci.be Denmark: fishersci.dk
Germany: fishersci.de Ireland: fishersci.ie Italy: fishersci.it
Finland: fishersci.fi France: fishersci.fr Netherlands: fishersci.nl
Norway: fishersci.no Portugal: fishersci.pt Spain: fishersci.es
Sweden: fishersci.se Switzerland: fishersci.ch UK: fishersci.co.uk

© 2022 Thermo Fisher Scientific Inc. All rights reserved.
Trademarks used are owned as indicated at fishersci.com/trademarks.



After the Kimtech™ A5 Sterile Cleanroom Apparel is gowned, add boot covers.

Complete gowning by adding goggles and a second pair of sterile gloves.